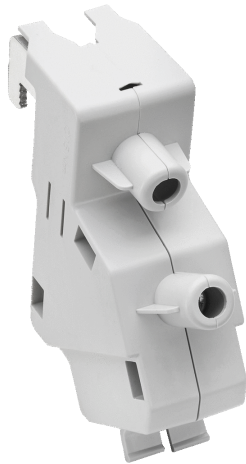


connection module with cover (01423)



The picture may show a similar product.

Description

Part No.: **01423** 000A

CRITO[®] 185Power

connection module with cover

for direct cable connection, box terminal, Cu 300 mm² / Al 240 mm²

angled

for Cu max. 300 mm² / Al max. 240 mm²

for busbars 30, 40, 60, 80, 100, 120 x 10

System

185Power

Product group 07

Subgroup 54

pack size 3

EAN 4021267014230

ETIM 5.0 EC000001

ETIM 8.0 EC000001

Approvals

Standards

IEC 61439-1:2020
IEC 60999-1:1999
IEC 60999-2:2003

CCC approval: no certification required

Technical data

Details IEC

Standards

IEC 61439-1:2020
IEC 60999-1:1999
IEC 60999-2:2003

Electrical data IEC

rated current (IEC): 500 A
rated voltage (IEC) AC: 690 V

rated peak withstand current I_{pk} max.: 50 kA
rated short-time withstand current I_{CW} (0.5 s) max.: 25 kA

Supplementary data IEC

The following values have been verified with tests under certain conditions. Please ask Wöhner for this conditions before designing your panel.

max. permitted voltage (IEC) AC: 1000 V
max. permitted voltage (IEC) DC: 1500 V
current capacity (IEC) max.: 630 A

Mechanical data

W x H x D: 42 x 118 x 110
weight: 35.0 kg/100
poles: 1-pole
for busbars: 30, 40, 60, 80, 100, 120 x 10

Terminal points

cage clamp connection

screw drive:	S6
wire stripping:	55 mm
min. cross-section:	70 mm ²
max. cross-section:	300 mm ²
Md min.:	26.0 Nm
Md max.:	30.0 Nm

Suitable for aluminium cables.

When using aluminium cables, observe the maintenance instructions.

Cu, Al: 70 - 240 mm² stranded round

Cu, Al: 70 - 240 mm² stranded sector

Cu, Al: 70 - 240 mm² solid sector

Cu: 300 mm² stranded round

Cu: 300 mm² stranded sector

Cu: 70 - 185 mm² flexible with wire-end ferrules

Material properties

halogen-free: Yes

Application notes

Suitable for aluminium cables.

When using aluminium cables, observe the maintenance instructions.

The insulation performance of the article depends on the installation conditions.

<https://pim.woehner.de/EN/EN/1000202516>