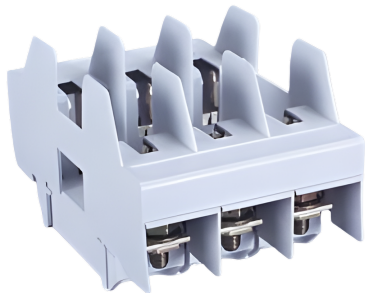


## NH fuse-base 160 A (03759)



The picture may show a similar product.

### Description

Part No.: **03759 000**

QUADRON<sup>®</sup> Panel

NH fuse-base 160 A

Size NH 00

both sides screw M8

size 00 / 3P, with touch protection

for mounting plate

### System

Panel

Product group 10

Subgroup 15

pack size 4

EAN 4021267037598

ECLASS 6.1 27142106  
ECLASS 7.1 27142106  
ETIM 4.0 EC000067  
ETIM 5.0 EC000067

## Approvals

### Standards

IEC 60269-1:2006 + A1:2009 + A2:2014  
IEC 60269-2:2013 + A1:2016

### Approvals

DNV GL



type number: NH-00

## Technical data

for fuse links size: NH 000, NH 00  
fuse links acc. to standard: IEC / HD 60269-2  
permitted power dissipation of the fuse-link: 12 W

### Details IEC

#### Standards

IEC 60269-1:2006 + A1:2009 + A2:2014  
IEC 60269-2:2013 + A1:2016

#### Electrical data IEC

rated current (IEC): 160 A  
rated voltage (IEC) AC: 690 V

rated voltage (IEC) DC: 440 V

rated surge voltage  $U_{imp}$ : 6 kV

short-circuit strength when protected by fuses: 50 kA

power dissipation of the article:

The power dissipation at a typical load of 80 % results to 8.0 W.

(The power dissipation at full load would be 12.5 W.)

### Supplementary data IEC

The following values have been verified with tests under certain conditions. Please ask Wöhner for this conditions before designing your panel.

max. permitted voltage (IEC) AC: 800 V

max. permitted voltage (IEC) DC: 800 V

### Mechanical data

W x H x D: 97 x 147 x 88

weight: 48.4 kg/100

poles: 3-pole

Mounting: for mounting plate

### Terminal points

screw connection

M8

screw drive: SW13

Md min.: 8.0 Nm

Md max.: 10.0 Nm

Not suitable for aluminium cables !

## Application notes

Not suitable for aluminium cables !

permitted power dissipation of the fuse-link: 12 W

# Accessories

connection accessories

covers



**79448 000**

grip lug cover  
for NH base and 33705  
NH 00

further accessories



**03519 000**

neutral conductor 160 A  
screw M8 at both sides  
for mounting plate



**03620 000**

neutral conductor 160 A  
clamp, both sides  
for mounting plate

accessories for fuses



**03502 000**

NH fuse extractor handle  
without sleeve  
size 000 - 3

<https://pim.woehner.de/EN/EN/1000047768>