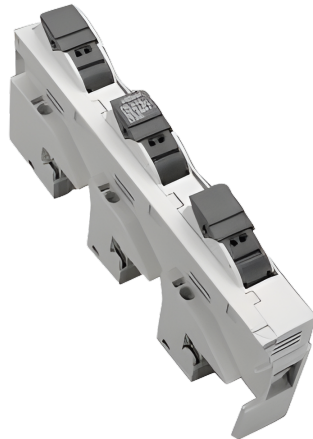


busbar mounted fuse holder (31954)



The picture may show a similar product.

Description

Part No.: **31954 000**

AMBUS[®] 60Classic

busbar mounted fuse holder

Size 10x38

for fuses 10x38 IEC 60269-2

10 x 38 / 3P

for busbars 12, 15, 20, 25, 30 x 5, 10 and section busbars

System

60Classic

Product group 01

Subgroup 46

pack size 4

EAN 4021267319540

ETIM 5.0 EC002705

ETIM 8.0 EC002705

Approvals

Standards

IEC 60947-1:2020

IEC 60947-3:2020 AC ratings only

UL 4248-1

Approvals

IEC (CB) , CSA , UL , VDE , CCC



for UL feeder circuits >250V

type number: AEL10x38

UL file: E230163, UL category (for USA): IZLT2 <https://www.ul.com>

UL file: E230163, UL category (for Canada): IZLT8 <https://www.ul.com>

CSA file: 110285, CSA class: 3211-37 <https://directories.csa-international.org>

CCC certificate: 21107317604

Technical data

for fuse links size:

10x38

fuse links acc. to standard:

IEC / HD 60269-2

permitted power dissipation of the fuse-link: 3 W

requirements for contact parts:

Fuse links with silver-plated contact pieces recommended.

For fuse links with nickel-plated contact pieces, a reduction factor of 0.8 is to be observed.

Details IEC

Standards

IEC 60947-1:2020

IEC 60947-3:2020 AC ratings only

Electrical data IEC

rated current (IEC): 32 A

rated voltage (IEC) AC: 690 V

rated voltage (IEC) DC: 440 V

rated surge voltage U_{imp} : 6 kV

Utilisation category AC (IEC 60947-3): AC-22B (500 V)
AC-21B (690 V)

approved with fuse links of operation class: gG
short-circuit strength when protected by fuses: 100 kA

power dissipation of the article:

The power dissipation at a typical load of 80 % results to 0.6 W.

(The power dissipation at full load would be 1.0 W.)

Supplementary data IEC

The following values have been verified with tests under certain conditions. Please ask Wöhner for this conditions before designing your panel.

max. permitted voltage (IEC) AC: 725 V

max. permitted voltage (IEC) DC: 462 V

A fuse-combination unit acc. to IEC 60947-3 can only be operated at a higher voltage than its rated voltage, if it is used as a fuse-disconnector without breaking capacity, up to its max. rated insulation voltage and labelled as such.

min. permitted operation temperature -20°C

max. permitted operation temperature 60°C

for fuse links as per IEC / EN 60269-2 (gG, max. 3W)

Details UL

Standards

UL 4248-1

for UL feeder circuits >250V

suitable for field-installed conductors

Electrical data UL

rated current (UL): 30 A
rated voltage (UL) AC: 600 V
rated frequency (UL): 50 / 60 Hz
rated voltage (UL) DC: 600 V

SCCR: 50 kA

Mechanical data

W x H x D: 27 x 200 x 104
weight: 18.5 kg/100
poles: 3-pole
for busbars: 12, 15, 20, 25, 30 x 5, 10 and section busbars

Type of fastening: patented click mechanism

Terminal points

Not suitable for aluminium cables !

nach IEC: Cu 1.5 ... 6 mm² (f, re)
nach UL /CSA: AWG 16 ... AWG 10 (str)

Material properties

halogen-free: Yes

Application notes

Not suitable for aluminium cables !

A fuse-combination unit acc. to IEC 60947-3 can only be operated at a higher voltage than its rated voltage, if it is used as a fuse-disconnector without breaking capacity, up to its max. rated insulation voltage and labelled as such.

permitted power dissipation of the fuse-link: 3 W

requirements for contact parts: Fuse links with silver-plated contact pieces recommended.

For fuse links with nickel-plated contact pieces, a reduction factor of 0.8 is to be observed.

for UL feeder circuits >250V

<https://pim.woehner.de/EN/EN/1000041259>