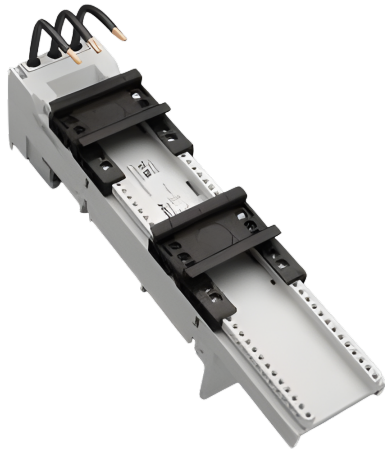


busbar adapter 32 A (32408)



The picture may show a similar product.

Description

Part No.: **32408** 000

EQUES[®] 60Classic

busbar adapter 32 A

3-pole

2 adjustable mounting rails

54 x 260, with removable upper section and leads AWG 10 (6 mm²)

for busbars 12, 15, 20, 25, 30 x 5, 10 and section busbars

with CrossLink[®]Technology

System

60Classic

Advantages of the product

Conductor ends ultrasonically sealed.

Click mechanism when pushing onto the busbar.

Product group 05

Subgroup 22

pack size 4
EAN 4021267324087

ETIM 5.0 EC001531
ETIM 8.0 EC001531

Approvals

Standards

IEC 61439-1:2020
UL 508

Approvals

CSA , UL , DNV GL



for UL feeder circuits >250V

type number: EMC6032-L

UL file: E123577, UL category (for USA): NMTR <https://www.ul.com>
UL file: E123577, UL category (for Canada): NMTR7 <https://www.ul.com>
CSA file: 110285, CSA class: 3211-37 <https://directories.csa-international.org>
CCC approval: no certification required

Technical data

Details IEC

Standards

IEC 61439-1:2020

Electrical data IEC

rated current (IEC): 32 A
rated voltage (IEC) AC: 690 V

rated isolation voltage U_i AC: 800 V
rated surge voltage U_{imp} : 6 kV

power dissipation of the article:

The power dissipation at a typical load of 80 % results to 2.2 W.

(The power dissipation at full load would be 3.5 W.)

Supplementary data IEC

The following values have been verified with tests under certain conditions. Please ask Wöhner for this conditions before designing your panel.

min. permitted operation temperature -40°C

Details UL

Standards

UL 508

for UL feeder circuits >250V

Electrical data UL

rated current (UL): 30 A

rated voltage (UL) AC: 600 V

rated frequency (UL): 50 / 60 Hz

SCCR unprotected max.: 5 kA

3 cycles (without OPD) @ 600 V AC

Mechanical data

W x H x D: 54 x 260 x 75

weight: 54.4 kg/100

poles: 3-pole

for busbars: 12, 15, 20, 25, 30 x 5, 10 and section busbars

Material properties

halogen-free: Yes

Application notes

There must be a clearance of at least 12 mm above the article to remove it from the busbar system. For compact mounting of complete motor circuits with commercially available switchgear and safe mechanical and electrical connection to the busbar system. In the test position, the structure locks and disconnects safely from the primary energy supply.

the short-circuit capacity of the combination of adapter and motor starter depends on the motor starter

for UL feeder circuits >250V

Accessories

accessories for mounting

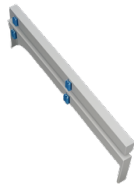


32969 000
mounting rail end stop
for adjustable mounting rails

further accessories



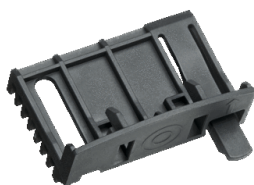
32948 000
mounting rail 54 mm
for busbar adapters



32964 000
side-mounted module for busbar adapters
attachable to both sides
9 x 200
for: EMC60..



32956 000
pilot switch for adapters with removable upper section
1 N/C



32953 000A
positioning piece for Siemens S2
for 45mm wide adapters with adjustable mounting rails

<https://pim.woehner.de/EN/EN/1000042942>