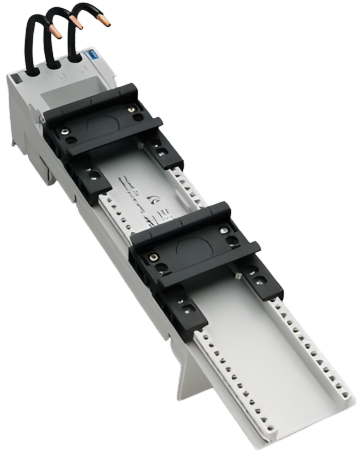


busbar adapter 63 A (32461)



The picture may show a similar product.

Description

Part No.: **32461** 000

EQUES[®] 60Classic

busbar adapter 63 A

3-pole

2 adjustable mounting rails

54 x 260, with leads AWG 8 (10 mm²)

for busbars 12, 15, 20, 25, 30 x 5, 10 and section busbars

System

60Classic

Advantages of the product

Conductor ends ultrasonically sealed.

Click mechanism when pushing onto the busbar.

Product group 05

Subgroup 24

pack size 4
EAN 4021267324612

ETIM 5.0 EC001531
ETIM 8.0 EC001531

Approvals

Standards

IEC 61439-1:2020
UL 508

Approvals

CSA , UL , DNV GL



for UL feeder circuits >250V

type number: EEC6063-L

UL file: E123577, UL category (for USA): NMTR <https://www.ul.com>
UL file: E123577, UL category (for Canada): NMTR7 <https://www.ul.com>
CSA file: 110285, CSA class: 3211-37 <https://directories.csa-international.org>
CCC approval: no certification required

Technical data

Details IEC

Standards

IEC 61439-1:2020

Electrical data IEC

rated current (IEC): 63 A
rated voltage (IEC) AC: 690 V

rated isolation voltage U_i AC: 800 V
rated surge voltage U_{imp} : 6 kV

power dissipation of the article:

The power dissipation at a typical load of 80 % results to 4.4 W.

(The power dissipation at full load would be 6.9 W.)

Supplementary data IEC

The following values have been verified with tests under certain conditions. Please ask Wöhner for this conditions before designing your panel.

min. permitted operation temperature -40°C

Details UL

Standards

UL 508

for UL feeder circuits >250V

Electrical data UL

rated current (UL): 65 A

rated voltage (UL) AC: 600 V

rated frequency (UL): 50 / 60 Hz

SCCR unprotected max.: 7.5 kA

3 cycles (without OPD) @ 600 V AC

SCCR protected max.: 100 kA

SCCR: 100 kA with MS45x 60 A / 480 V AC

100 kA with PKZ5 60 A / 480 V AC

Mechanical data

W x H x D: 54 x 260 x 63

weight: 43.0 kg/100

poles: 3-pole

for busbars: 12, 15, 20, 25, 30 x 5, 10 and section busbars

Material properties

halogen-free: Yes

Application notes

There must be a clearance of at least 12 mm above the article to remove it from the busbar system.
For compact mounting of complete motor circuits with commercially available switchgear and safe mechanical and electrical connection to the busbar system.

the short-circuit capacity of the combination of adapter and motor starter depends on the motor starter

for UL feeder circuits >250V

Accessories

accessories for mounting



32969 000

mounting rail end stop
for adjustable mounting rails

further accessories



32948 000

mounting rail 54 mm
for busbar adapters



32963 000

side-mounted module for busbar adapters
attachable to both sides
9 x 200
for: EEC60..



32953 000A

positioning piece for Siemens S2
for 45mm wide adapters with adjustable mounting rails

<https://pim.woehner.de/EN/EN/1000043008>