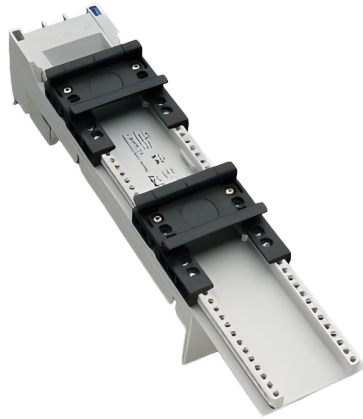


## busbar adapter 80 A (32472)



The picture may show a similar product.

### Description

Part No.: **32472 000**

EQUES<sup>®</sup> 60Classic

busbar adapter 80 A

3-pole

2 adjustable mounting rails

54 x 260, without leads, with terminals 16 mm<sup>2</sup>, operated from behind  
for busbars 12, 15, 20, 25, 30 x 5, 10 and section busbars

### System

60Classic

Product group 05

Subgroup 27

pack size 4

EAN 4021267324728

ETIM 5.0 EC001531

ETIM 8.0 EC001531

# Approvals

## Standards

IEC 61439-1:2020

UL 508

## Approvals

CSA , UL , DNV GL



for UL feeder circuits >250V

type number: EEC6080-L

UL file: E123577, UL category (for USA): NMTR <https://www.ul.com>

UL file: E123577, UL category (for Canada): NMTR7 <https://www.ul.com>

CSA file: 110285, CSA class: 3211-37 <https://directories.csa-international.org>

CCC approval: no certification required

# Technical data

## Details IEC

### Standards

IEC 61439-1:2020

### Electrical data IEC

rated current (IEC): 80 A

rated voltage (IEC) AC: 690 V

rated isolation voltage  $U_i$  AC: 800 V

rated surge voltage  $U_{imp}$ : 6 kV

power dissipation of the article:

The power dissipation at a typical load of 80 % results to 6.0 W.

(The power dissipation at full load would be 9.3 W.)

## Supplementary data IEC

The following values have been verified with tests under certain conditions. Please ask Wöhner for this conditions before designing your panel.

max. permitted voltage (IEC) DC: 800 V

min. permitted operation temperature -40°C

## Details UL

### Standards

UL 508

for UL feeder circuits >250V

### Electrical data UL

rated current (UL): 80 A

rated voltage (UL) AC: 600 V

rated frequency (UL): 50 / 60 Hz

SCCR unprotected max.: 10 kA  
3 cycles (without OPD) @ 600 V AC

SCCR protected max.: 100 kA  
with fuse Class CF, J or T 150 A / 600 V AC

SCCR: 65 kA with any NKJH/7 type E 80 A / 480 V AC  
65 kA with any DIVQ/7 circuit breaker 80 A / 480 V AC

### Mechanical data

W x H x D: 54 x 260 x 63

weight: 43.8 kg/100

poles: 3-pole

for busbars: 12, 15, 20, 25, 30 x 5, 10 and section busbars

### Terminal points

cage clamp connection

screw drive: PZ2

wire stripping: 11 mm

min. cross-section: 1.5 mm<sup>2</sup>

max. cross-section: 16 mm<sup>2</sup>

Md min.: 2.4 Nm

Md max.: 3.6 Nm

### Material properties

halogen-free: Yes

## Application notes

There must be a clearance of at least 12 mm above the article to remove it from the busbar system.

for feeder circuits as per UL508a, accessory 32974 is required

the short-circuit capacity of the combination of adapter and motor starter depends on the motor starter

for UL feeder circuits >250V

# Accessories

## accessories for mounting



**32969 000**

mounting rail end stop  
for adjustable mounting rails

## connection accessories



**32974 000**

terminal cap for UL  
for busbar adapters 32466, 32467, 32469 and 32472



**32914 000**

lead AWG 4 (25 mm<sup>2</sup>), 210 mm long  
for adapters with cage clamps



**32915 000**

double-lead 2x AWG 10 (2x 6 mm<sup>2</sup>), 130 / 280 mm long  
for adapters with cage clamps



**32900 000A**

lead AWG 6 (16 mm<sup>2</sup>), 210 mm long  
for adapters with cage clamps



**32916 000A**

lead AWG 10 (6 mm<sup>2</sup>), 280 mm long  
for adapters with cage clamps

**32921 000**

lead AWG 14 (2.5 mm<sup>2</sup>), 105 mm long  
for adapters with cage clamps

**32929 000A**

lead AWG 12 (4 mm<sup>2</sup>), 190 mm long  
for adapters with cage clamps

**32935 000A**

lead AWG 10 (6 mm<sup>2</sup>), 190 mm long  
for adapters with cage clamps

**32936 000A**

lead AWG 8 (10 mm<sup>2</sup>), 190 mm long  
for adapters with cage clamps

**32918 000A**

lead AWG 14 (2.5 mm<sup>2</sup>), 190 mm long  
for adapters with cage clamps

further accessories

**32948 000**

mounting rail 54 mm  
for busbar adapters



**32963 000**

side-mounted module for busbar adapters

attachable to both sides

9 x 200

for: EEC60..

<https://pim.woehner.de/EN/EN/1000043093>