

NH fuse switch-disconnector size 000, 125 A, panel mounting (33217)



The picture may show a similar product.

Description

Part No.: **33217 000**

NH fuse switch-disconnector size 000, 125 A, panel mounting

Size NH 000

box terminal

for mounting plate

System

Panel

Advantages of the product

Self-closing inspection holes are available in the cover.

Product group 09

Subgroup 01

pack size 1

EAN 4021267332174

ETIM 5.0 EC001040

ETIM 8.0 EC001040

Approvals

Standards

IEC 60947-1:2020

IEC 60947-3:2020 AC ratings only

UL 4248-1

Approvals

IEC (CB) , UL , CCC , DNV GL



for UL feeder circuits >250V

type number: LTS-000

UL file: E230163, UL category (for USA): IZLT2 <https://www.ul.com>

CCC certificate: 2004010302117260

Technical data

for fuse links size:

NH 000

fuse links acc. to standard:

IEC / HD 60269-2

permitted power dissipation of the fuse-link: 9 W

requirements for contact parts:

Fuse links with silver-plated contact pieces recommended.

For fuse links with nickel-plated contact pieces, a reduction factor of 0.8 is to be observed.

Details IEC

Standards

IEC 60947-1:2020

IEC 60947-3:2020 AC ratings only

Electrical data IEC

rated current (IEC): 125 A

rated voltage (IEC) AC: 690 V

rated voltage (IEC) DC: 440 V

rated isolation voltage U_i AC: 800 V

rated isolation voltage U_i DC: 500 V

rated surge voltage U_{imp} : 6 kV

Utilisation category AC (IEC 60947-3): AC-21B (690 V / 80 A)

AC-22B (500 V / 100 A)

AC-22B (400 V / 125 A)

cond. short-circuit current with fuses (AC): 50 kA / 690 V

approved with fuse links of operation class: gG

power dissipation of the article:

The power dissipation at a typical load of 80 % results to 3.2 W.

(The power dissipation at full load would be 5.0 W.)

Supplementary data IEC

The following values have been verified with tests under certain conditions. Please ask Wöhner for this conditions before designing your panel.

max. permitted voltage (IEC) DC: 800 V

further utilisation category DC (IEC 60947-3): DC specifications: 2 current paths (L1,L3) in series

DC-22B (440V/63A)

DC-22B (220V/100A)

DC-21B (440V/80A)

DC-21B (220V/125A)

A fuse-combination unit acc. to IEC 60947-3 can only be operated at a higher voltage than its rated voltage, if it is used as a fuse-disconnector without breaking capacity, up to its max. rated insulation voltage and labelled as such.

min. permitted operation temperature -40°C

max. permitted operation temperature 55°C

In accordance with the specified AC and DC switching properties and in consideration of the overload conditions, certain distances to earthed metal parts are to be adhered to. detailed information upon inquiry

When several devices are used side-by-side in continuous operation, the rated load factor specified in IEC / EN 61439-1, Table 1, must be observed.

Details UL

Standards

UL 4248-1

for UL feeder circuits >250V

Electrical data UL

rated current (UL): 125 A
rated voltage (UL) AC: 600 V
rated frequency (UL): 50 / 60 Hz

SCCR: 100 kA

Mechanical data

W x H x D: 89 x 143 x 75
weight: 57.2 kg/100
poles: 3-pole
Mounting: for mounting plate

front degree of protection: IP30

Terminal points

cage clamp connection

screw drive: S4
min. cross-section: 1.5 mm²
max. cross-section: 50 mm²
re: 1.5 - 10 mm²
rm: 16 - 50 mm²
f: 2.5 - 50 mm²
f + AE: 1.5 - 50 mm²
(f + AE may not fit with max. cross-section)

Not suitable for aluminium cables !

Terminal space: 10 x 10

Material properties

halogen-free: No

Application notes

Not suitable for aluminium cables !

A fuse-combination unit acc. to IEC 60947-3 can only be operated at a higher voltage than its rated voltage, if it is used as a fuse-disconnector without breaking capacity, up to its max. rated insulation voltage and labelled as such.

permitted power dissipation of the fuse-link: 9 W

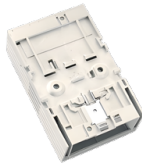
requirements for contact parts: Fuse links with silver-plated contact pieces recommended.

For fuse links with nickel-plated contact pieces, a reduction factor of 0.8 is to be observed.

for UL feeder circuits >250V

Accessories

accessories for mounting



33247 000
rapid mounting set
for 1 mounting rail
size 000

connection accessories



33906 000
comb-type busbar, 3-pole, for 2 NH fuse switch disconnectors
35 mm²
for: 33217



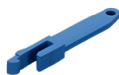
33907 000
connecting terminal, front connection
for 3-pole comb-type busbar 35 mm², suitable for NH-fuse-switch-
disconnector size 000 with box terminal
4 - 35 mm²

covers



33219 000
trim frame, single
130 x 210
size 000

further accessories



33051 000
lid interlock
for sealing wire
Size 000



33156 000

pilot switch

changeover 250 V AC / 5 A, 30 V DC / 4 A

<https://pim.woehner.de/EN/EN/1000046620>