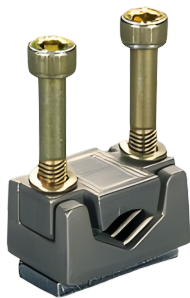


wedge clamp terminal, single, for Cu and Al cond.  
(33365)



The picture may show a similar product.

## Description

Part No.: **33365** 000

wedge clamp terminal, single, for Cu and Al cond.

70 - 120 mm<sup>2</sup>

for LTS 250

BPE-200

**Product group** 14

**Subgroup** 51

**pack size** 3

**EAN** 4021267333652

**ETIM 5.0** EC002498

**ETIM 8.0** EC002498

**ETIM 10.0** EC002498

# Approvals

## Standards

IEC 60947-1:2020

IEC 60947-3:2020 AC ratings only

# Technical data

## Details IEC

### Standards

IEC 60947-1:2020

IEC 60947-3:2020 AC ratings only

## Mechanical data

weight: 6.7 kg/100

## Terminal points

min. cross-section: 70 mm<sup>2</sup>

max. cross-section: 120 mm<sup>2</sup>

Suitable for aluminium cables.

When using aluminium cables, observe the maintenance instructions.

70 – 120

## Material properties

halogen-free: Yes

# Application notes

Suitable for aluminium cables.

When using aluminium cables, observe the maintenance instructions.

determined by main product

<https://pim.woehner.de/EN/EN/1000049717>