

## NH in-line switch-disconnector-fuse size 3 (33640)



The picture may show a similar product.

### Description

Part No.: **33640** 000A

QUADRON®185Power Speed

NH in-line switch-disconnector-fuse size 3

with fuse monitoring

connection bottom M12

double-breaking

operator independent switching (snap-action mechanism)

for busbars 30, 40, 60, 80, 100, 120 x 10

accessory required for busbar mounting

### System

185Power

## Advantages of the product

When the cover is open, all touchable parts are voltage-free

Operator-independent switching

Lockable cover with double-bit lock

Mixed installation with all components 185Power

Can be sealed when switched on or off

Can be locked with up to 3 padlocks when switched off

**Product group** 18

**Subgroup** 55

**pack size** 1

**EAN** 4021267336400

**ETIM 5.0** EC001046

**ETIM 8.0** EC001046

**ETIM 10.0** EC001046

## Approvals

### Standards

IEC 60947-1:2020

IEC 60947-3:2020 AC ratings only

### Approvals

IEC (CB)



type number: QS185-3

## Technical data

for fuse links size:	NH 3
fuse links acc. to standard:	IEC / HD 60269-2
permitted power dissipation of the fuse-link:	48 W
requirements for contact parts:	Fuse links with silver-plated contact pieces recommended. For fuse links with nickel-plated contact pieces, a reduction factor of 0.8 is to be observed.

### Details IEC

#### Standards

IEC 60947-1:2020

IEC 60947-3:2020 AC ratings only

#### Electrical data IEC

rated current (IEC): 630 A

rated voltage (IEC) AC: 400 V

rated isolation voltage  $U_i$  AC: 400 V

rated surge voltage  $U_{imp}$ : 4 kV

Utilisation category AC (IEC 60947-3): AC-22B (800 V / 315 A)  
AC-23B (690 V / 500 A)  
AC-23B (500 V / 630 A)

cond. short-circuit current with fuses (AC): 100 kA / 400 V  
120 kA / 400 V

approved with fuse links of operation class: gG

power dissipation of the article:

The power dissipation at a typical load of 80 % results to 160.0 W.

(The power dissipation at full load would be 250.0 W.)

#### Supplementary data IEC

The following values have been verified with tests under certain conditions. Please ask Wöhner for this conditions before designing your panel.

A fuse-combination unit acc. to IEC 60947-3 can only be operated at a higher voltage than its rated voltage, if it is used as a fuse-disconnector without breaking capacity, up to its max. rated insulation voltage and labelled as such.

min. permitted operation temperature	-25°C
max. permitted operation temperature	55°C
min. permitted temperature for transport and storage	-25°C

The use of knife links is not permitted. The rated values specified in this product description apply exclusively to the use of fuses.

distance to grounded parts = 0mm at 120kA

Special operating conditions corresponding to IEC / EN 61439-1 may yield to faulty activations of pilot switches and fuse monitors. The operating conditions have to be considered for the analysis of status signals.

Degree of protection IP30 at front, degree of protection near terminal depends on installation

### Mechanical data

W x H x D: 100 x 941 x 274

weight: 1512.0 kg/100

for busbars: 30, 40, 60, 80, 100, 120 x 10

CT can be integrated in the device:	ja
CT can be integrated in the CT module:	ja
front degree of protection:	IP30

### Material properties

halogen-free: Yes

## Application notes

A fuse-combination unit acc. to IEC 60947-3 can only be operated at a higher voltage than its rated voltage, if it is used as a fuse-disconnector without breaking capacity, up to its max. rated insulation voltage and labelled as such.

permitted power dissipation of the fuse-link: 48 W

requirements for contact parts: Fuse links with silver-plated contact pieces recommended.

For fuse links with nickel-plated contact pieces, a reduction factor of 0.8 is to be observed.

# Accessories

## accessories for mounting



### **33650 000A**

mounting set with 3 bolts  
for busbar connection on drilled busbars, including positioner  
size 1 - 3



### **33651 000A**

mounting set with 3 terminal clamps  
for drill-less mounting on the busbar system, with and without  
CrossLink® touch-safe protection covers  
size 1 - 3



### **33652 000A**

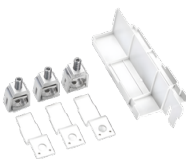
insulated screw extension for terminal clamp  
for safe live working with standard tools  
size 1 - 3

## connection accessories



### **33648 000A**

connection set box terminal 70 mm<sup>2</sup> - 240 mm<sup>2</sup>  
including rear cover  
size 1 - 3



### **33649 000A**

connection set box terminal 120 mm<sup>2</sup> - 300 mm<sup>2</sup>  
including rear cover  
size 1 - 3

## covers



### **33733 000A**

terminal compartment cover  
universal for NH-rails size 1 - 3 and connection rail 800 A  
size 1- 3



### 33758 000A

lateral bearing strip  
for front covers  
size 00 - 3



### 33113 000

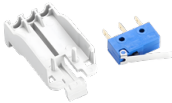
lateral cover support  
for front covers  
size 00 - 3



### 33647 000A

rear cover for terminal compartment cover  
size 1 - 3

further accessories



### 33642 000A

pilot switch  
changeover 250 V AC / 5 A, 30 V DC / 4 A  
QUADRON®185Power Speed size 00, 1, 2, 3



### 33762 000A

universal current transformer module  
for mounting in the connection compartment  
size 1 - 3

measuring transformers 333mV



### 37280 000A

measuring transformer 500 A / 333 mV  
size CT1  
class 1  
NEW



**37288 000A**

measuring transformer 500 A / 333 mV

size CT1

class 0.5s

**NEW**



**37284 000A**

measuring transformer 500 A / 333 mV

size CT1

class 0.5

**NEW**

current transformers class 1



**37201 000A**

current transformer 250 A / 5 A

size CT1

1.5 VA / class 1



**37202 000A**

current transformer 400 A / 5 A

size CT1

1.5 VA / class 1



**37203 000A**

current transformer 500 A / 5 A

size CT1

1.5 VA / class 1

current transformers class 0.5



**37204 000A**

current transformer 200 A / 5 A

size CT1

1.5 VA / class 0.5



**37205 000A**

current transformer 250 A / 5 A  
size CT1  
1.5 VA / class 0.5



**37206 000A**

current transformer 400 A / 5 A  
size CT1  
1.5 VA / class 0.5



**37207 000A**

current transformer 500 A / 5 A  
size CT1  
1.5 VA / class 0.5



**37208 000A**

current transformer 200 A / 5 A, with decl. of conformity  
size CT1  
1.5 VA / class 0.5  
**stock sale**



**37209 000A**

current transformer 250 A / 5 A, with decl. of conformity  
size CT1  
1.5 VA / class 0.5



**37210 000A**

current transformer 400 A / 5 A, with decl. of conformity  
size CT1  
1.5 VA / class 0.5



**37211 000A**

current transformer 500 A / 5 A, with decl. of conformity  
size CT1  
1.5 VA / class 0.5

<https://pim.woehner.de/EN/EN/1000177757>