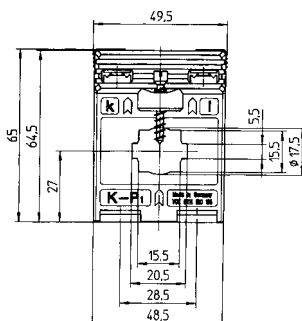
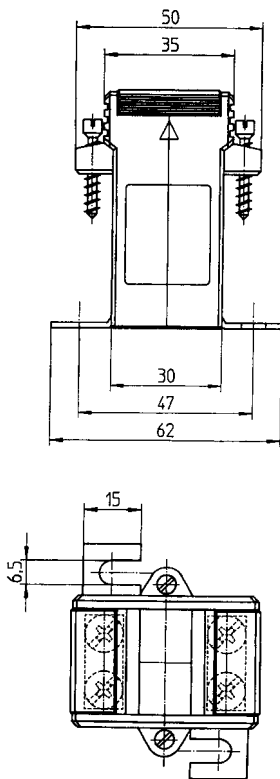


# ASK 205.3

## Aufsteck-Stromwandler *Plug-in current transformers*



Prim. Strom <i>prim. current</i>	VA	Sek. Strom / <i>sec. current</i> 1A		Sek. Strom / <i>sec. current</i> 5A	
		Klasse / class 1		Klasse / class 1	
		Best.-Nr. <i>order-no.</i>		Best.-Nr. <i>order-no.</i>	
60	1	2219		2019	
75	1	2220		2020	
80	1,25	2221		2021	
100	1,25	2222		2022	
	1,5	2223		2023	
150	1,5	2224		2024	
	2,5	2225		2025	
200	1,5	2226		2026	
	2,5	2227		2027	
250	2,5	2228		2028	
	5	2229		2029	
300	2,5	2230		2030	
	5	2231		2031	
400	2,5	2232		2032	
	5	2233		2033	
	10	2234		2034	

Primärleiter <i>Primary conductor</i>	20 x 5 mm
Rundleiter <i>Round conductor</i>	Ø 17,5 mm
Wandlerbreite <i>Transformer width</i>	48,5 mm
Schnappbefestigung <i>Snap-on mounting</i>	Best.-Nr./order-no. <b>55014</b>
Plombierplatte <i>Sealed shutter</i>	Best.-Nr./order-no. -